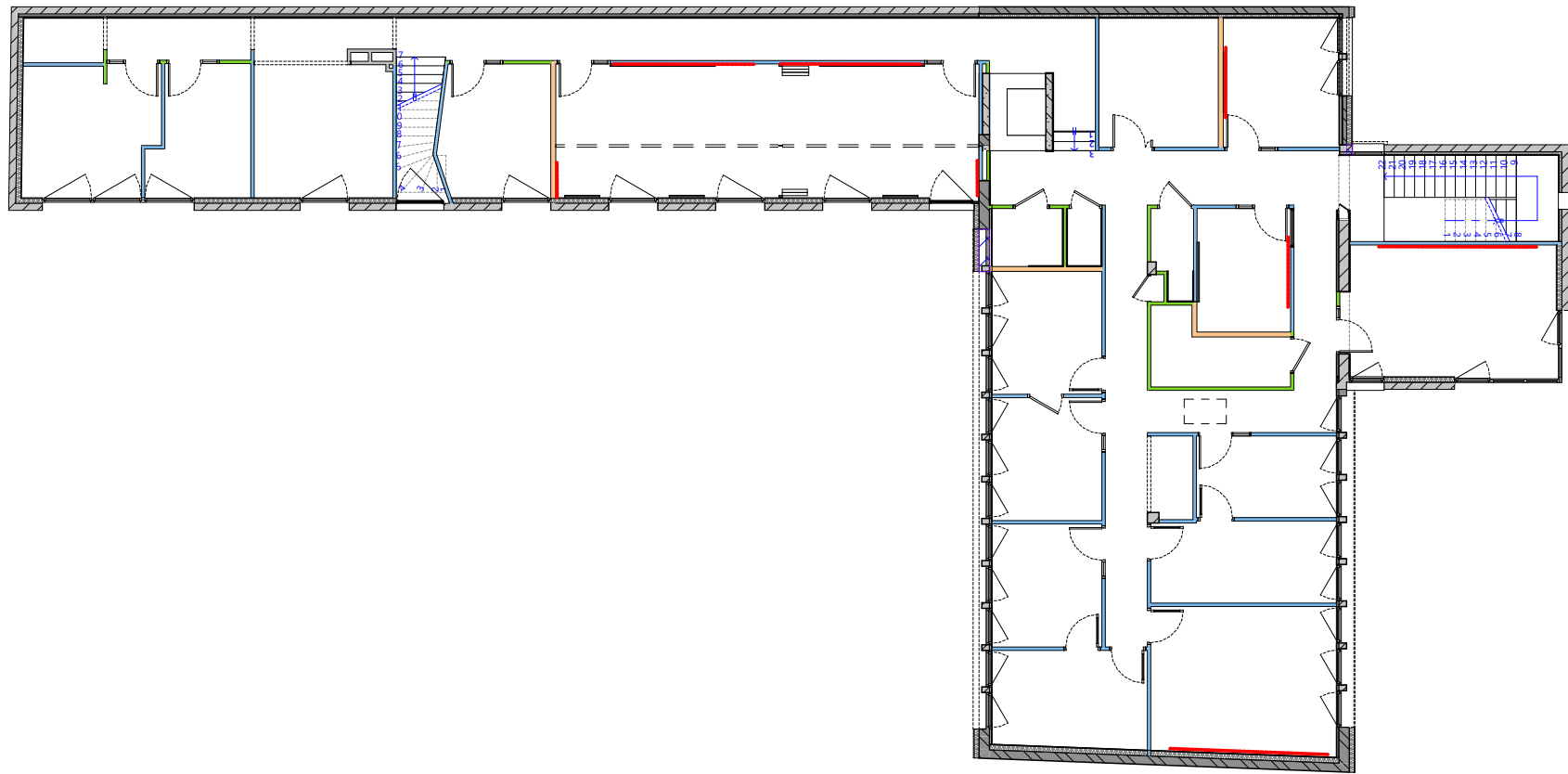


- Double ossature RA > 61dB
type SAA 140 Duotech 25
- Simple ossature RA > 52dB
type 98/48 Placo Phonic BA13
- Simple ossature RA > 45dB
type 98/48
- Simple ossature
type 98/48
- Complément d'absorption murale $a_w > 0,70$
type rigitone 12-25 + laine minérale 5 cm

CLOISONS - RDC - Cloisons 1:200



CLOISONS - ETAGE 1 - Cloisons 1:200